

remas

linking environmental
management and
performance

Issue 1 • Spring 2003



In this issue:

- A new era for regulation 3
- EMAS and ISO 14001 – who leads the way in Europe? 4-5
- remas trailblazers 6-7
- Get on board 8



with help and support
of the LIFE programme

What is remas?

Remas is an ambitious and far-reaching three-year European study into the benefits of environmental management systems (EMS) in the context of regulation. The €2million project is co-financed by the LIFE Environment Fund, the Environment Agency, the Scottish Environment Protection Agency, the Institute of Environmental Management & Assessment and the Irish Environmental Protection Agency.

By studying the performance of industrial sites and comparing those sites that have robust EMS with those that don't, we will identify which factors are most valuable for the regulator. After all the data collected has been collated, measured and analysed, we will cascade our findings to key EU stakeholders.

Remas is committed to promoting the highest standards of environmental management practice and effective regulatory policy throughout Europe ... and, potentially, the world.



with help and support
of the LIFE programme



Hello, I'm Martyn Cheesbrough and I'm heading up the remas project. This column is an opportunity to explain how the project came into existence and to share the progress we have made to date with readers.

I was assigned the role of remas Project Manager because of my previous work with the UK Environment Agency's environmental management systems and regulation project (EMSR). This looked at the potential duplication between EMS and regulation at six industrial sites in England and Wales. Prior to EMSR I'd written a thesis on the subject and helped Rover/Jaguar introduce EMS into its supply chain network (see www.greening-industry.co.uk).

One of the main barriers we kept finding in our work was the lack of empirical evidence linking the implementation of EMS at industrial sites to improved environmental performance. One of the comments I got back from EMSR and during the development of remas was 'Isn't there enough evidence out there already? Just look at the material produced on the EMAS statements for starters.'

I agree these do provide a fair amount of information. And many people have analysed these, and other datasets, to prove (or disprove) the case for EMS. However, a problem lies in the fact that the statements are published by companies with the express purpose of providing evidence of performance to a host of stakeholders ... and not for the purposes of comparing performance between sites, nor performance against regulatory standards.

Although we will be reviewing previous work and including references on our website, remas is new in that it is specifically looking at the value of EMS to the regulator. This is why we are comparing the performance of a wide range of sites (including those with no EMS), and discriminating between those with robust EMS and those without. We want to attribute a clear value to EMS.

I must thank our project partners IEMA, IEPA and SEPA for their input before I sign off. Also, I need to address the common question 'What does remas stand for?'. The real answer may be obvious to anyone who has ever been asked to complete a LIFE form! There is a box requiring a project name which must relate to the project and cannot duplicate previously used words. After an hour with an English dictionary and the letters in 'regulation', 'environmental management systems' and 'emas', we came up with nemesis, emasculate and remas. Easy to see why remas won!

I hope this project will raise healthy debate and I am happy to answer any technical questions in future updates of this newsletter.

Martyn Cheesbrough

A handwritten signature in black ink, appearing to read 'M. Cheesbrough'.

remas Project Manager



New era for regulation

Green business is a hot topic ... witness the global growth of the environmental technology and services sector, worth £300 billion and growing! Environmental management is seen as a core issue for many organisations, one which ranks with employee welfare and product quality. However, the adoption of Environmental Management Systems (EMS) is much lower in some EU countries than others, and the reasons are not completely clear. How do the experts believe remas can help?

"Independently certified EMS represent a new generation of voluntary compliance environmental policies," says remas Project Manager Martyn Cheesbrough. "Our goal is to demonstrate to industry and regulators which measures most effectively protect the environment so that governments and other policymakers can use our findings to shape the future development of international regulatory policy and guidance. We have solid support from IMPEL, representing regulatory organisations in current and future member states. And members of the EMAS 'Article 14' committee – responsible for advising on the implementation of EMAS – have also given us their backing."

Companies who demonstrate environmental responsibility through robust EMS are increasingly attractive to investors and more popular with their customers and the communities in which they operate. By, for example, making more efficient use of resources, they protect the environment and cut operating costs. What's more, well planned, properly implemented EMS make it easier for companies to comply with local and international regulations and standards. This is because they provide a strong framework for reliable, credible monitoring and record-keeping – and the basis for continuous, measurable improvement.

Jim Gray, Head of Regulatory Development at the Environment Agency in England and Wales, believes that EMS can play an

important role in the regulatory process: "Modern regulation is all about taking into account the way industry manages its environmental risks. Robust EMS help companies demonstrate to us that they are serious about protecting the environment."

And Martin Baxter, Operations Manager of the Institute of Environmental Management and Assessment (IEMA) – the leading international professional body for environmental practitioners – explains: "Environmental

"Remas will demonstrate the effectiveness of EMS as a tool which regulators and policy makers can have confidence in"

management systems such as EMAS and ISO 14001 provide a platform for companies to make significant environmental improvements. Remas is an opportunity to examine what factors lead to the most significant improvements, and to explore how companies' EMS efforts can best be reflected in the environmental regulatory regime throughout Europe. Remas will demonstrate the effectiveness of EMS as a tool which regulators and policy makers can have confidence in. It will also demonstrate how effective implementation of EMAS improves environmental performance faster or further than command and control regulation."

EC Directorate General for the Environment Administrator Jose-Jorge

Diaz-Del-Castillo also welcomes the project: "We expect remas to demonstrate to stakeholders the real values of EMS with top standards such as EMAS. One of these values is the requirement that organisations must comply with all relevant environmental legislation under EMAS registration. Remas' findings and conclusions will hopefully indicate the effective contribution of EMAS to the improvement of overall environmental performance, and how this can be translated into regulatory flexibility."

Irish Environmental Protection Agency (EPA) Licensing and Control Programme Manager Gerry Byrne says remas is an effective means of demonstrating the benefits of the EMS approach to better managing and regulating activities with polluting potential. He explains: "In Ireland each IPC licence issued requires the operator to develop an EMS to ensure compliance with the licence conditions, and to continuously drive improvements in environmental performance."

Scottish Environment Protection Agency (SEPA) Operations Coordinator Dave Gorman adds: "The role of EMS in regulation is an important issue for SEPA. SEPA is seeking to modernise its approach to regulation and as such is delighted to be involved in the remas project. We will be fully engaging with the project with a view to ensuring that its outcomes, and its contribution to the modernisation of regulation, are carefully considered."

EMAS and ISO 14001: Europe at a glance



The United Kingdom

Year of entry: 1973
 Political system: Constitutional monarchy
 Capital city: London
 Size: 242,500 km²
 Population: 58.6 million
 Currency: Pound sterling

EMAS registered sites: 76
 ISO 14001 registered sites: 2,917



Ireland

Year of entry: 1973
 Political system: Republic
 Capital city: Dublin
 Size: 70,000 km²
 Population: 3.7 million
 Currency: Euro

EMAS registered sites: 8
 ISO 14001 registered sites: 170



Sweden

Year of entry: 1995
 Political system: Constitutional monarchy
 Capital city: Stockholm
 Size: 450,000 km²
 Population: 8.9 million
 Currency: Swedish Crown

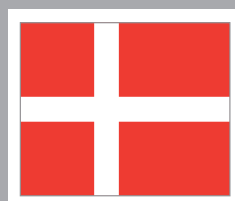
EMAS registered sites: 201
 ISO 14001 registered sites: 2,730



Finland

Year of entry: 1995
 Political system: Republic
 Capital city: Helsinki
 Size: 338,000 km²
 Population: 5.1 million
 Currency: Euro

EMAS registered sites: 41
 ISO 14001 registered sites: 750



Denmark

Year of entry: 1973
 Political system: Constitutional monarchy
 Capital city: Copenhagen
 Size: 43,094 km²
 Population: 5.3 million
 Currency: Danish Crown

EMAS registered sites: 130
 ISO 14001 registered sites: 1,088



The Netherlands

Year of entry: Founding member
 Political system: Constitutional Monarchy
 Capital city: Amsterdam
 Size: 41,864 km²
 Population: 15.8 million
 Currency: Euro

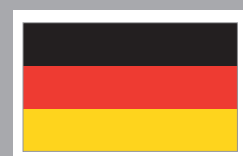
EMAS registered sites: 27
 ISO 14001 registered sites: 1,073



Belgium

Year of entry: Founding member
 Political system: Constitutional monarchy
 Capital city: Brussels
 Size: 30,158 km²
 Population: 10.2 million
 Currency: Euro

EMAS registered sites: 18
 ISO 14001 registered sites: 255



Germany

Year of entry: Founding member
 Political system: Federal republic
 Capital city: Berlin
 Size: 356,854 km²
 Population: 82 million
 Currency: Euro

EMAS registered sites: 2,486
 ISO 14001 registered sites: 3,700



Luxembourg

Year of entry: Founding member
 Political system: Constitutional monarchy
 Capital city: Luxembourg
 Size: 2,586 km²
 Population: 429,200
 Currency: Euro

EMAS registered sites: 1
 ISO 14001 registered sites: 17



Greece

Year of entry: 1981
 Political system: Republic
 Capital city: Athens
 Size: 131,957 km²
 Population: 10.5 million
 Currency: Euro

EMAS registered sites: 9
 ISO 14001 registered sites: 72



Austria

Year of entry: 1995
 Political system: Republic
 Capital city: Vienna
 Size: 83,858 km²
 Population: 8.1 million
 Currency: Euro

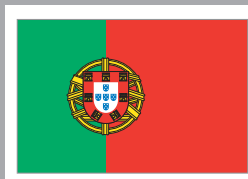
EMAS registered sites: 331
 ISO 14001 registered sites: 301



Italy

Year of entry: Founding member
 Political system: Republic
 Capital city: Rome
 Size: 301,263 km²
 Population: 57.6 million
 Currency: Euro

EMAS registered sites: 123
 ISO 14001 registered sites: 1,894



Portugal

Year of entry: 1986
 Political system: Republic
 Capital city: Lisbon
 Size: 92,072 km²
 Population: 10.8 million
 Currency: Euro

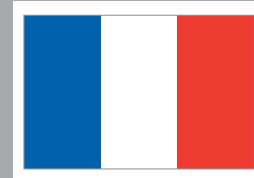
EMAS registered sites: 3
 ISO 14001 registered sites: 137



Spain

Year of entry: 1986
 Political system: Constitutional monarchy
 Capital city: Madrid
 Size: 504,782 km²
 Population: 39.4 million
 Currency: Euro

EMAS registered sites: 263
 ISO 14001 registered sites: 3,228



France

Year of entry: Founding member
 Political system: Republic
 Capital city: Paris
 Size: 550,000 km²
 Population: 60.4 million
 Currency: Euro

EMAS registered sites: 24
 ISO 14001 registered sites: 1,666

Information taken from
www.europa.eu.int; EMS statistics from
 Federal Environmental Agency, Berlin,
 Germany as at December 2002

To find out
 more about
 EMAS and
 ISO 14001
 see our
 jargonbuster
 on page 10

Trail blazers

A number of companies signed up early to help us refine our project methodology and data collection system. Three of them explain why they joined remas and how they are benefiting from the use of recognised environmental management systems.



comprising cement works, depots, head office and joint venture operations.

The company is benefiting from the use of an EMS, both

Lafarge Cement UK

"We have committed to communicating and working with government bodies to help develop future environmental legislation. That's why we warmly welcome the opportunity to work on the remas project," says Lafarge Cement UK Environment Manager Danny Lawrence.

Lafarge Cement UK (LCUK) is the largest cement maker in the UK. Part of world leading building materials manufacturer Lafarge Group, the company can supply up to six million tonnes of cement a year from its eight cement works.

In 2001, LCUK was the first European company to achieve multi-site EMAS registration across all its operations –

in terms of demonstrating environmental improvement and regulatory compliance. Explains Danny: "Regulators are starting to recognise the benefits of EMS; this is particularly evident to us when applying for Pollution Prevention and Control (PPC) permits, and determining Operator Performance and Risk Assessment (OPRA) ratings.

"We've also seen a marked improvement in stakeholder relationships, and now actively solicit all parties' views through annual stakeholder discussion groups.

"The environment is at the heart of our licence to operate – this concept drives us to continuously improve our environmental performance."

Reckitt Benckiser

Reckitt Benckiser is a global household cleaning and personal care product manufacturer.

With operations in 60 countries, and sales in 180 countries, the company is clear on the need for proactive corporate responsibility. Reckitt Benckiser is committed to running its business in an environmentally responsible and sustainable manner, and to seeking continuous improvement in its environmental performance. Fifteen of its manufacturing facilities are externally certified to ISO 14001.

"Effective Group and site-specific EMS are fundamental in achieving our environmental policy, by providing the required control, competency and reporting at all levels," explains Environmental and Health & Safety Director Edward Butt.

Edward says joining remas is already paying dividends: "This is an excellent opportunity for us to assess and drive further improvements in our EMS, our monitoring and measurement practices, and our internal and external reporting. It's giving us a better understanding of the regulator's approach and philosophy, and helping us benchmark our operations against other manufacturing businesses."



He adds: "We are particularly pleased that Reckitt Benckiser's involvement in remas' development phase will help others improve their environmental management and performance when the project is rolled-out to a much larger number of businesses."

VAW-IMCO

VAW-IMCO (Guss und Recycling) GmbH is the wholly owned subsidiary of IMCO – the world's largest aluminium and zinc recycler.

The company operates two plants in Germany where it is a leading provider of speciality alloys to the automotive industry. VAW-IMCO was amongst the first European aluminium recycling companies to receive EMAS approval when its Grevenbroich HQ was registered in October 1997. The company's Tögging site came on stream in September 2002.

"We wanted to take part in the remas study because we are one of the first companies in our industry to push management systems forward," says Head of Management Systems Franz-Rudolf Brenk.

EMAS certification has reduced the number of visits from the regulator, and speeded up the time it takes for permits to be issued.

"This frequently took over a year but can now be achieved in as little as two months. The whole process is much simpler because we have reduced the need for discussion," explains Franz-Rudolf. "This is good news for our customers and suppliers."

VAW-IMCO pioneered the adoption of a combined Quality, Environment, Health & Safety (EHS) policy in its industry sector. Since 2001, the company has required a single audit comprising all quality, environmental performance and employee welfare measurements. The new system has resulted in a 99 per cent acceptance of the company's operations against standard VDA 6.1 laid down by the German automotive industry. "This is a very positive sign," says Franz-Rudolf.

"We are so confident of the benefits of EMAS and the combined EHS that our Director, Roland Scharf-Bergmann, addressed the European Aluminium Refiners and Remelters congress in Munich in March to talk about the benefits."

Parallel projects

Remas is formally launched at a joint UK workshop in June 2003 with parallel European project ENAP – Exploring New Approaches in regulating industrial installations – a Netherlands Ministry of Housing, Spatial Planning & the Environment initiative.



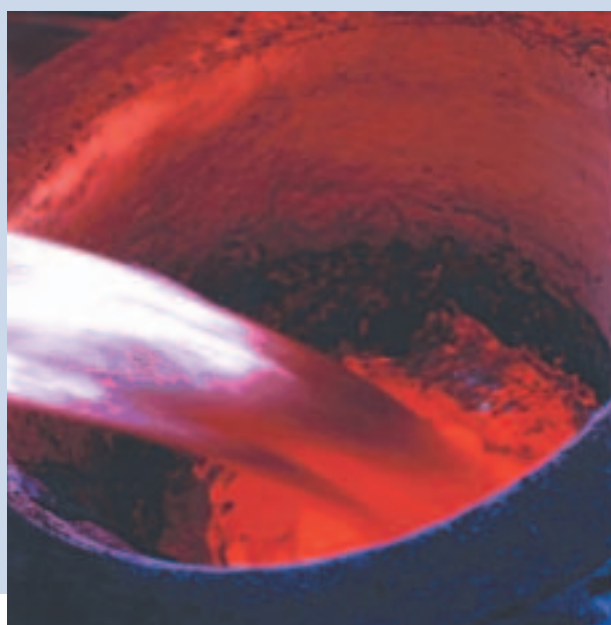
Remas is also networking with PERFORM, a UK sustainability study which is helping companies to benchmark and improve their environmental performance.

PERFORM is being coordinated by SPRU – Science and Technology Policy Research at the University of Sussex. SPRU is a leading research organisation in the field of science, technology and innovation policy, and its wider economic, social and environmental implications.

PERFORM was launched in summer 2002 and data will be collected from more than a dozen large manufacturing sectors from June 2003. It will use corporate sustainability data from published sources to focus on social and environmental performance, and allow companies to compare themselves with competitors, and benchmark their performance against best practice.

"We will be asking questions such as 'Is there a link between the level of social and environmental performance and the profitability of a firm?' and 'How is performance variability linked to the level of environmental management?'" says Project Coordinator Frans Berkhout.

Remas, ENAP and PERFORM are looking at the potential to share data and experience. Explains remas Project Manager Martyn Cheesbrough: "The three studies are running in parallel and this is an excellent networking opportunity. We are keen to know if any other similar research is planned or underway in other member states."



Get on board!

In remas' quest to determine which EMS work best and why, we welcome all newcomers.

Q: How do I register?

A: Fill in the online registration form on the remas website www.remas.info (via project – register). The project page also explains which industry sectors are eligible and describes the formal registration process. Alternatively, you can register by phoning the remas team on +44 (0) 117 914 2989.

Q: What happens next?

A: Remas will acknowledge your registration within 14 days.

You will be asked to sign an agreement between yourselves, remas and your local regulator which sets out the terms under which your data will be supplied and used.

We will then contact you about the data collection process. The data collection will involve completing a simple questionnaire.

Full guidance on how to fill it in will be given nearer the time.

Q: When will you be collecting the data?

A: We will be collecting questionnaires between June 2003 and June 2005. Your site may be requested to fill in a maximum of two questionnaires over this period.

Q: What data will you be collecting?

A: The questionnaire will ask you about the level of EMS engagement within a site. Using specific environmental

indicators, it will also ask how well your site performs against European benchmarks e.g. PPC BREF notes.

Q: Will I be shown the questionnaire in advance?

A: We will give you at least a week's notice of the content of the questionnaire.

Q: Who can I contact if I have any problems?

A: If you would like to speak to someone about any aspect of the data collection process, please contact Graham Winter on +44 (0) 117 914 2868.

Q: Will you visit my site?

A: The questionnaire can be completed online. However we may need to visit your site to obtain more detailed information, or to verify the data. If we do need to arrange a visit we will give you and your regulator at least 14 days notice. In some cases, we will arrange a follow-up site visit for further data collection purposes.

Q: How long will the questionnaire take to complete?

A: We hope to ensure that the questionnaire takes no more than a day to complete. The length of time spent completing the form depends on factors such as the size of

your site and how easy it is to obtain data on your performance and management system.

Q: What happens once you have collected the data?

A: We will update you on the project within three months of receiving your completed questionnaire. We will also send you reports explaining how your site/s compare with other participating sites.

If you need to ask any other questions then speak to our team – contact details on page 11



Worth its weight: remas is already forging ahead thanks to companies such as VAW IMCO – part of IMCO, the world's largest aluminium and zinc recycler

Net-working

The remas website was launched in November 2002 to provide online, up to date information on the project's progress. It is located on the European Environment Agency's site within the EnviroWindows platform...

The European Environment Agency (EEA)

The EEA aims to support sustainable development and to help achieve significant and measurable improvement in Europe's environment through the provision of timely, targeted, relevant and reliable information.

European Environment Information and Observation Network (EIONET)

EnviroWindows

Environmental Information for Businesses and Local Authorities

Environmental
Management

remas

The site is user friendly and contains a number of important links to our project partners, plus key information about environmental management systems.

Registering an interest in joining the remas study is as simple as completing an online form (via project – register). You can also email us at name@remas.info, or failing that, write in to us. The project page also explains which industry sectors are eligible and describes the formal registration process.

The remas site is supported by an Extranet where participants, partners and research associates are invited to share information and access associated documents. You will automatically become a member of this dedicated online interest group when you complete the online registration form. Just click on project – register.

Once you're a member, you will need to enter your username and password in order to access the members' Extranet pages. In time documents will be shared in multiple languages.

If you have any problems accessing the website, please call Graham Winter on +44 (0)117 914 2868, or email him at gwinter@remas.info. He also welcomes general feedback.



www.remas.info

EMS jargonbuster

During the last decade, two major supranational EMS standards have been introduced – ISO 14001 and EMAS, the European Union's Eco-Management and Audit Scheme. A significant number of countries have adopted these (see pages 4-5).

ISO 14001

ISO 14001 is the internationally recognised standard for EMS that can be applied throughout a company. It prescribes management controls covering a wide range of environmental matters.

Companies may choose to use the standard as guidance for internal purposes, or they may seek assessment from an independent third party – usually an accredited certification body.

EMAS

EMAS is a European Regulation and is applicable to a wide range of industrial, service, administrative and government sectors. It

recognises and rewards organisations that go beyond minimum legal compliance and continuously improve their environmental performance.

Companies are registered through verification by an approved third party. EMAS registered organisations must publish independently checked environmental statements on an annual basis.

- Once a company has established its environmental policy and implemented an EMS (and, in the case of EMAS, published an environmental statement), it can be assessed with a view to **certification**.
- Certification is the job of an **external environmental verifier – EMAS or certification body (ISO 14001)** – which validates the company's compliance.
- The verifier, or certification body, provides a company with certification if the audit shows that all parts of the EMS meet the required standard. In the case of EMAS, the company is registered by the Institute of Environmental

Management & Assessment (IEMA). IEMA also maintains a register of ISO 14001 certified sites.

- External verifiers are part of the certification process – itself regularly audited to ensure that EMS audits conform to rigorous standards pertinent to industry sector/ specialism.
- Certifiers must be **accredited** – i.e. able to demonstrate to an appropriate 'accreditation body' that they are capable of assessing the EMS against particular standards.
- The International Accreditation Forum oversees all the accreditation bodies around the world to ensure they conform to documented accreditation standards.
- If a site is in breach of legal requirements, it can be suspended or deleted from EMAS. The local regulator is charged with informing the local competent body of any contraventions.



The remas team

Project manager

Martyn Cheesbrough

Tel: +44 (0)117 914 2669

Email: mcheesbrough@remas.info

Webmaster

Graham Winter

Tel: +44 (0)117 914 2868

Email: gwinter@remas.info

Technical Officer

Jill Rankin

Tel: +44 (0)117 914 2837

Email: jrankin@remas.info

Dissemination Advisor

Andrienne Philippou

Tel: +44 (0)117 914 2791

Email: aphilippou@remas.info

General enquiries

Tel: +44 (0)117 914 2989

Fax: +44 (0)117 950 2826

Email: admin@remas.info

Remas enquiries

c/o Environment Agency

Block 1, Government Buildings

Burghill Road

Westbury-on-Trym

Bristol

BS10 6BF



remas partners



The LIFE Environment Fund
www.europa.eu.int

Environment Agency
(in England & Wales)
www.environment-agency.gov.uk



**ENVIRONMENT
AGENCY**

Scottish Environment
Protection Agency
www.sepa.org.uk



Environmental Protection
Agency (in Ireland, EPA)
www.epa.ie



Institute of Environmental
Management & Assessment
www.iema.net



key contacts

IMPEL – European Union Network for the Implementation of
Environmental Law

www.europa.eu.int/comm/environment/impel

European Environment Agency (EEA)

www.eea.eu.int

Eco-Management and Audit Scheme (EMAS)

Help desk tel: +32 2 2828454

Email: emas@cec.eu.int

“I believe EMAS is the highest standard of environmental management ... the benefits of EMAS are clear. Reduction of environmental impacts can improve relations with stakeholders, customers and the local community, and win wider recognition for sound environmental management...”

**Rt Hon Michael Meacher MP,
UK Environment Minister, November 2002**

“Fifty eight per cent of the general public across Europe feel that industry and commerce does not pay enough attention to its social and environmental responsibilities.”

**European Study on Corporate Social
Responsibility, MORI**

“We view business and the environment as parts of the same total system: the Earth’s ecosystem. Therefore, we think through the environmental consequences of every aspect of business.”

**Eckart Pfeiffer,
former CEO of Compaq**

